

October 2023

North County Society Fine Art

Calendar

October 10th

Christine Bowman

Demo

Tuesday At the RB
Library at 11:30-2:30

Christine Bowman

**October 28th
Workshop**

Pastel Workshop will
be held at Oasis

Saturday October
28th at 11:30-3:30

November 14th

**Zoom Demo John
Erwin**

Pens and Watercolor

November 18

**Zoom Workshop John
Erwin**

Pens and Watercolor

Christine Bowman, Pastelist

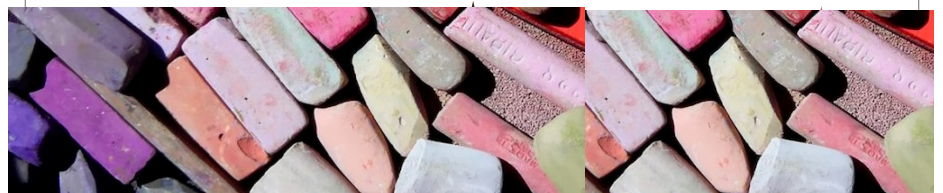
October 10th Demo

Workshop October 28th



The Christine Bowman's Demo and Workshop is Pastel Plein Air. Christine will teach how to capture a pastel plein air painting using a variety of papers and under paintings. She challenges artists to select a favorite outdoor scene to paint, or a favorite group of trees. Paint it again and again using different papers, different under paintings and pastels. Christine demonstrates her plein air set up, too

The October 10th Tuesday the demonstration will take place at the RB Library at 11:30-2:30. The Workshop will be Saturday October 28th at 11:30-3:30 at Oasis 17170 Bernardo Center Drive.





President's Message

Hello Members,

I'm always happy when fall and cooler temps set in because it's so much more pleasant to work in garage studios like I do, or sketch and paint outdoors.

With getting back to painting in mind, I am announcing a few fun activities for the next few months in which you may participate. Our fundraiser sale of your hand-painted tiles is scheduled as part of our Holiday Open House at Oasis on December 9 and also the next Gallery 21 Exhibit in the Spring.

The Holiday Party will also include an unframed mini painting grab bag, another opportunity to be creative. Bring one, get one!

Your President,
Janet Keto
janetketo@gmail.com

Christine Bowman

mainly does plein air pastel painting. She paints in North Country San Diego and the San Pasqual Valley near where she lives. Plein air paintings from her travels to France, Australia, Mexico, Canada, and other parts of the USA can be seen on her website, along with travel sketches and photography. Christine is a member of the Pastel Society of America, as well as a member of the IAPS (International Association of Pastel Societies) for which she is on the Communications Committee. **Artist website:** <http://www.christinebowman.com/>



Linda Doll's Watercolor "peoplescape" Demonstration



Linda Doll's demonstration was very successful. We had about 10 visitors from the community as well as approximately 20 regular members in attendance. Linda demonstrated how she applies a background wash, as she transfers the outline of the person in the "peoplescape". She explained the variety and colors she uses to create stains. The image above right is her finished demo piece.



For the **Workshop**, Linda supplied some drawings to work from. Some members brought their own drawings and they were transferred onto the watercolor paper. The supply list was simple and the final paintings were amazing.

Member's Wins and Announcements

Doris Bertch had 3 paintings accepted into the EAP exhibit "Absolutely Abstracts" which is showing from October 13th to November 3rd. Janet Keto also had a painting juried into this show as well Michael Lafata, our newest member, had 3 paintings in this show.



Doris Bertch *Forest Dreams.*

Oil/cold wax on board



Janet Keto *Checkered Past*

Acrylic Collage



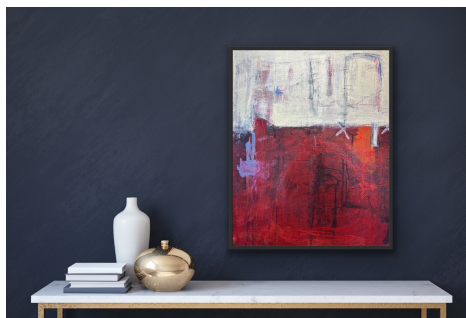
Michael Lafata *Something Primal* HM

Mixed Media



Michael Lafata *Flows Tone*

Mixed Media EAP.



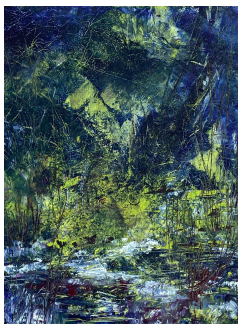
Michael Lafata *Tango*

Mixed Media EAP



Michael's *Last Day of Autumn* 1st Place

Mixed Media ART 30



Doris also had two paintings accepted into the Brooks Theater Exhibit.

Pictured Left *Into the Deep* Pictured to the Right *On the Darkside* both *Oil/cold wax on board*

New Member: Mike Lafata

Pictured below is our newest member of NCSFA at the RB Oasis Center. He is standing next to his Triptych *Fishing Boats*. Oasis contacted Art 30th for paintings to decorate their walls. Michale's paintings *Fishing Boats* were the ones they selected.



Announcements From NCSFA Board of Directors

REMINDER: We are looking for a new LOGO, please send me your ideas, even rough sketches are fine. Deadline: Halloween October 31st. Submit your entries to JanetKeto@gmail.com You could be a winner!

WE NEED YOUR HELP!

Our dedicated board members work diligently to keep our art group vibrant. As duties come up, we will be looking for more helpers. Please say YES when asked to lend a hand so we can continue the programs, workshops, shows, sales, and other activities that we all enjoy. It's up to each of us, the members to participate in some way.

SEND YOUR WINS for the November Newsletter to Sharon by email: sharnnpaul@gmail.com (The deadline for submissions is October 29th Sunday.) Thank you, Sharon Ford, Newsletter Editor.

Doris Birch is the Featured Artist at RB Library Upstairs Gallery October 1st 2023 through December 31st 2023

Of Land and Sea

Doris Bertch

www.DorisBertchArt.com

Email dabertch@cox.net

Artist's Statement:

I'm a transplant from the Pacific Northwest, moving to Southern CA in the late 1980's. After watching a pastel demo, I just fell in love with the vibrancy of the colors.

Lately I have branched out to the world of Oil Painting and Oil with cold wax techniques. Always fascinated by the ocean and the natural landscapes in my surroundings, I try to paint what I see and feel.

I have attended numerous workshops & classes over the years from noted instructors such as Stephanie Birdsall, Marla Baggetta, Stan Sperlak, Jeanne Rosier Smith, Helen Shafer Garcia, and Glen Maxion. I am a member of the Cold Wax Academy online membership taught by Rebecca Crowell and Jerry McLaughlin for the past 2 years.

Galleries where artwork has been shown: Escondido Municipal Gallery, Escondido, Coal Gallery, Carlsbad, Poway Center for the performing Arts, Poway, Gallery 21, in Spanish Village, San Diego, Rancho Bernardo Community Church.

Memberships: Pastel Society of Southern California, North County Society of Fine Art., Escondido Municipal Gallery.

Always fascinated by the ocean and the natural landscapes in her surroundings, Doris creates impressions of what she sees and feels.

